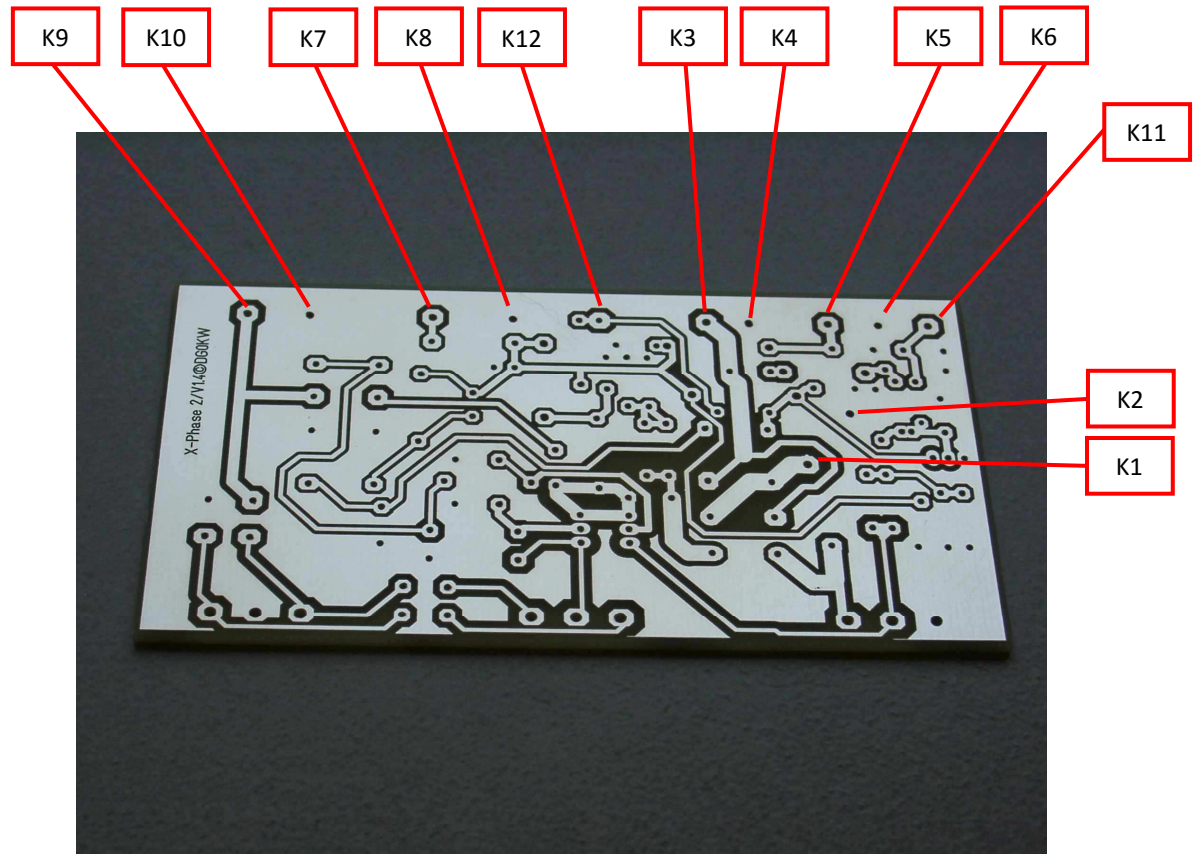


Connections X-Phase 2 V1.4 DG0KW



Notes:

K1	Main Antenna	K9	AUX Antenna
K2	Main Antenne (shield)	K10	AUX Antenna (shield)
K3	TRX HF IN	K11	PTT (PTT to GND)
K4	TRX HF IN (shield)	K12	LED red Cathode
K5	12V-13,8V DC		
K6	12V-13,8V DC GND		
K7	LED green Cathode		
K8	LED GND		