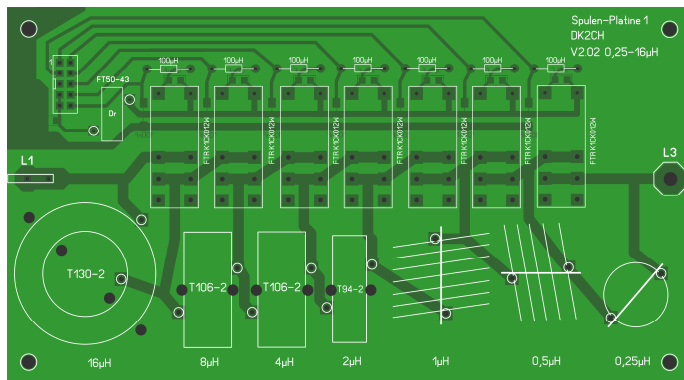
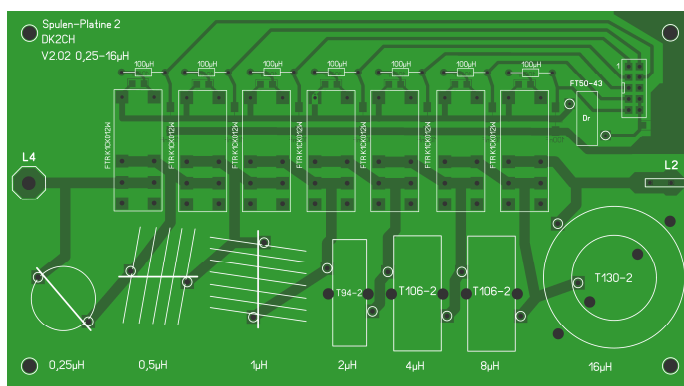




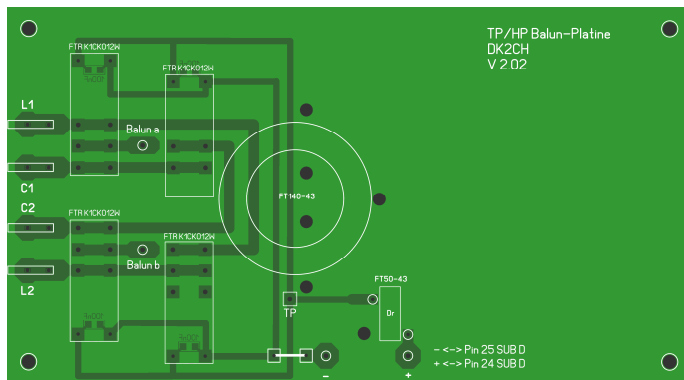
DK2CH Spulen-Platine 1 (160mm x 88mm)



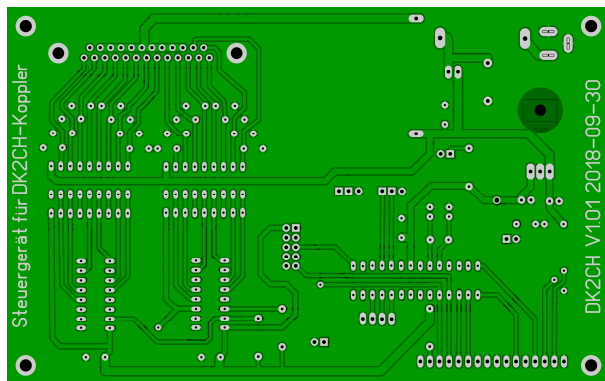
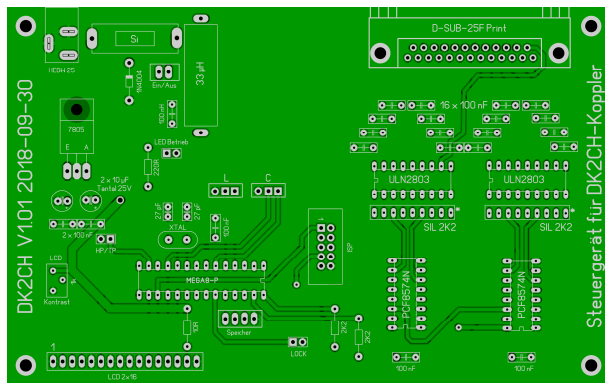
DK2CH Spulenplatte 2 (160mm x 88mm)



DK2CH Balun-Platine (160mm x 88mm)



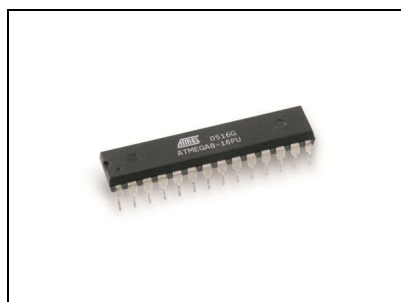
DK2CH Steuergerät (160mm x 88mm)



DK2CH Spulenkörper (FR4-Material)



DK2CH  $\mu$ -Controller



<https://www.dh4ym.de/>



Alle Platinen auch einzeln bestellbar!